

Plasmid Isolation

Experimental Aim: To isolate plasmid (pET28a) from DH5-Alpha Cells using **MACHEREY-NAGEL KIT**.

Method: The following cultures were inoculated and incubated overnight at 37 °C at 225 RPM.

	LB	Antibiotic (Stock Conc.)	Antibiotic (Working Conc.)	Observations after 13 hrs
pET28a	50 mL	100mg/mL of Kan	30ug/mL	Turbid

Nanodrop Result

Sample	ng/ul	A(260/A280)	A(260/230)
pET28a	569.9	1.86	2.05

Result:

The isolated plasmid was stored in -20 C freezer for further use.

Bacterial Transformation

Experimental Aim: Transforming competent BL21(DE3) Cells with empty pET28a plasmid.

Method: The Transformation for BL21(DE3) cells were carried out using the standard transformation protocol.

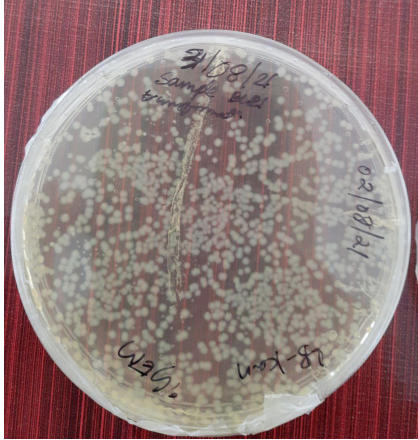
Observation:

- BL21 DE3 cells with empty pET28a vector showed growth on LB+Kan Plates whereas the BL21 DE3 cells with plasmid did not show any growth.

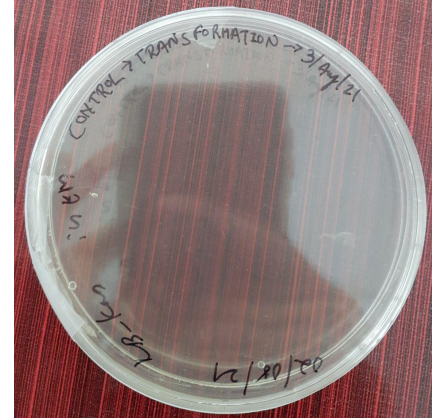
Conclusions:

- Transformation was carried out successfully.

Transformed BL21(DE3) cells



BL21(DE3) Containing Empty vector pET28a



CONTROL